



2011 New Products Update on Pages 14-15

2011 NEW PRODUCTS UPDATE: PAGES 14-15



Body Circle Designs has been manufacturing hand crafted body piercing jewelry in our Seattle, WA shop since 1990. Our mission is to provide the highest quality body piercing jewelry at a competitive price along with fast, individualized, friendly service. In developing innovative designs and perfecting our classic styles, we strive to maintain the quality and attention to detail on which we have built our reputation.

100% GUARANTEED QUALITY

Body Circle Designs' jewelry is 100% guaranteed to be free of flaws, and to be the exact size, gauge, and style that you ordered. We will gladly replace any jewelry that does not meet our standards. All of our jewelry is made in our Seattle manufacturing facility. We use only the highest grade materials in accordance with the APP's strict standards. Each piece of jewelry is hand polished to a flawless mirror finish. All our jewelry is ultrasonically cleaned before packaging. We have built our reputation on quality jewelry, fast service, and competitive prices.

FAST SERVICE

Body Circle Designs is committed to quality customer service. Our extensive inventory allows us to ship most orders in one to two days. Custom orders are usually ready to ship in one to two weeks. Most gold orders take less than one week to ship. If you ever have a question or problem we will always do our best to accommodate you without delay.

FREE SHIPPING

Orders \$200 and over are shipped for free to anywhere in the United States via US Priority Mail. This takes 2 - 3 days to anywhere in the US. Orders \$500 and over are shipped for free to anywhere in the US via US Express Mail (1-2 day shipping). Orders under \$200 are charged a small shipping fee and shipped via US Priority Mail. You will be informed of all your shipping options when you place your order. We will make every effort to ship your order in the manner that best suits your needs and budget.

PAYMENT

Payment may be made via check, money order, credit card or PayPal. We accept Visa and MasterCard. Until credit terms have been established, payment must be made by either credit card or PayPal. Overdue accounts will be charged a late payment equal to 1.5% (18% per annum) of the outstanding balance due as interest.

OUTSIDE THE US

All orders shipped outside the United States must be prepaid via credit card, money order, or wire transfer in US dollars unless credit terms have been established. Shipping costs for outside of the United States will be determined on an individual basis. US Express Mail and DHL are our preferred shipping options for all orders shipped outside the United States.

RETURN POLICY

No returns or exchanges on jewelry without return authorization. Please call for details. No returns or exchanges on gold jewelry or custom jewelry. If we made a mistake, or there is a flaw in your jewelry, we will be glad to accommodate you. Please call first.

CONTENTS

Rings.....	2-3
Barbells.....	4-5
Dermal Anchors.....	5
Surface Bars.....	5
Labret Jewelry.....	6
Nostril Jewelry.....	7
Navel Jewelry.....	7
Nipple Shields.....	7
Claws.....	8
Crescents.....	9
Ear Spirals.....	9
Plugs.....	9
Septum Jewelry.....	10
Titanium Jewelry.....	11
Gold Jewelry.....	12
Cuffs & Collars.....	13
Tools.....	13

No Minimum Order Quantity Discounts

see price list or call for details

Body Circle Designs
PO Box 68249
Seattle, WA 98168

phone: 206-244-8430
toll free (US & Canada): 800-244-8430
fax: 206-244-3478

e-mail: bcd@bodycircle.com
web: www.bodycircle.com



**ASSOCIATION OF PROFESSIONAL PIERCERS
CORPORATE SPONSOR**
www.safepiercing.org

photographers: Jennifer Hale and Scott Heller
jewelry models: David, Debra, Jenn, Jezebel, J.J. Lobo, Patrick, Polly, Sabrina, Tiffany and Troy

JEWELRY SIZING

To determine the size of your jewelry you need to know two things:

- 1) the wire thickness or **gauge** of your jewelry, usually abbreviated "**ga**" (see below right)
- 2) the size, meaning either the **length** or the **inside diameter** of your jewelry, measured in fractions of an inch (see below).

Length for barbells is the distance *between* the balls.

For curved barbells the length is the shortest distance between the ends, measured straight across.

Inside Diameter is the width of the inside of the ring or circular barbell.



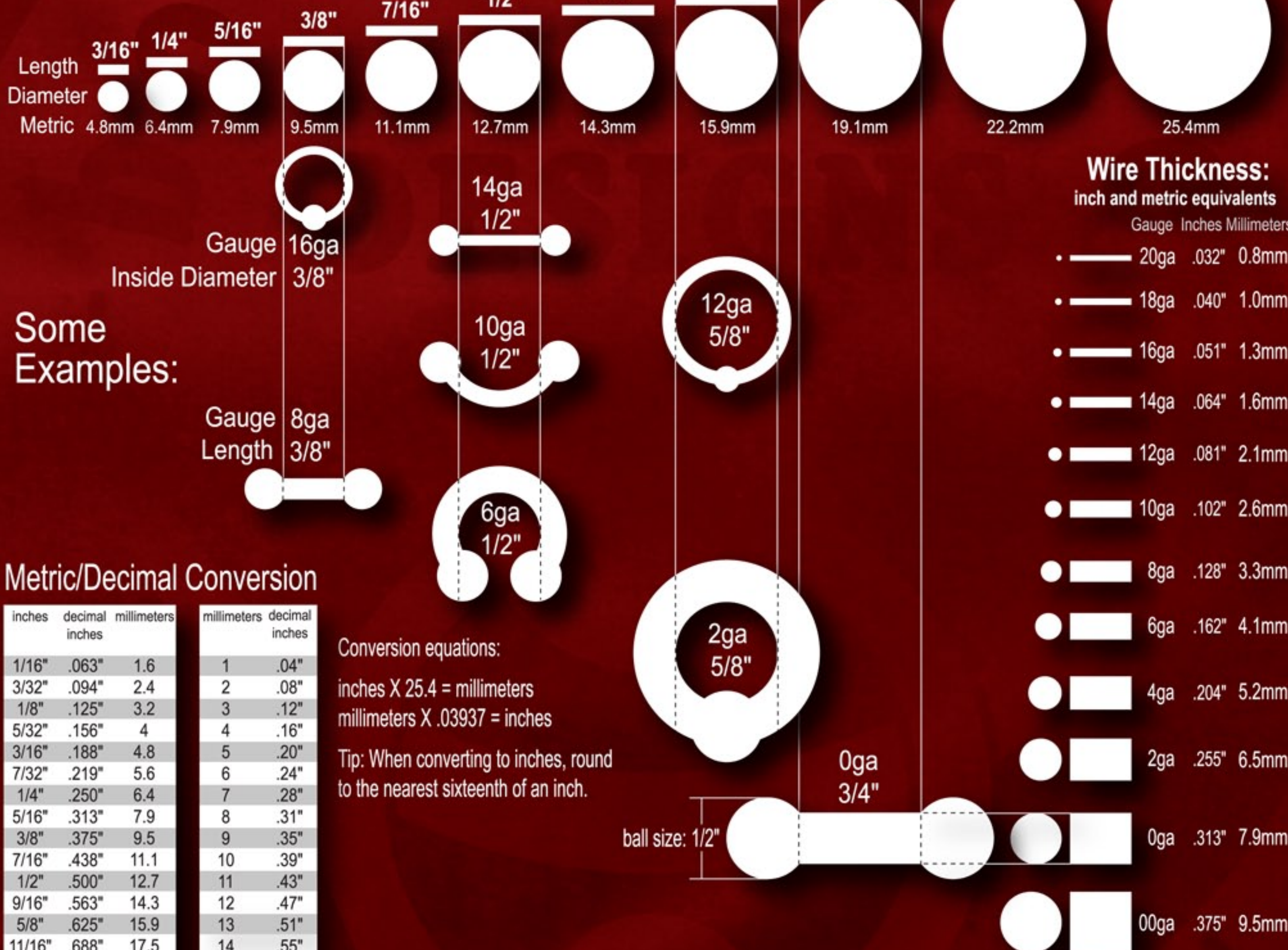
Beads for Rings:



Barbell Balls:



For Barbells up to 6ga. Standard ball size varies for each type and size of barbell.



Metric/Decimal Conversion

inches	decimal inches	millimeters
1/16"	.063"	1.6
3/32"	.094"	2.4
1/8"	.125"	3.2
5/32"	.156"	4
3/16"	.188"	4.8
7/32"	.219"	5.6
1/4"	.250"	6.4
5/16"	.313"	7.9
3/8"	.375"	9.5
7/16"	.438"	11.1
1/2"	.500"	12.7
9/16"	.563"	14.3
5/8"	.625"	15.9
11/16"	.688"	17.5
3/4"	.750"	19.1
13/16"	.813"	20.6
7/8"	.875"	22.2
15/16"	.938"	23.8
1"	1.000"	25.4
1 1/8"	1.125"	28.6
1 3/16"	1.188"	30.2
1 1/4"	1.250"	31.8
1 5/16"	1.313"	33.4
1 3/8"	1.375"	34.9
1 7/16"	1.438"	36.5
1 1/2"	1.500"	38.1
1 5/8"	1.625"	41.3
1 3/4"	1.750"	44.5
1 7/8"	1.875"	47.6
2"	2.000"	50.8

millimeters	decimal inches
1	.04"
2	.08"
3	.12"
4	.16"
5	.20"
6	.24"
7	.28"
8	.31"
9	.35"
10	.39"
11	.43"
12	.47"
13	.51"
14	.55"
15	.59"
16	.63"
17	.67"
18	.71"
19	.75"
20	.79"
21	.83"
22	.87"
23	.91"
24	.94"
25	.98"
26	1.02"
27	1.06"
28	1.10"
29	1.14"
30	1.18"

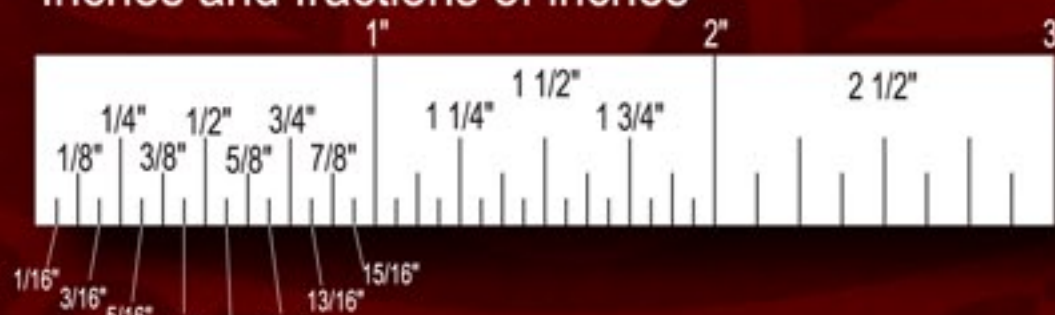
Conversion equations:

inches X 25.4 = millimeters

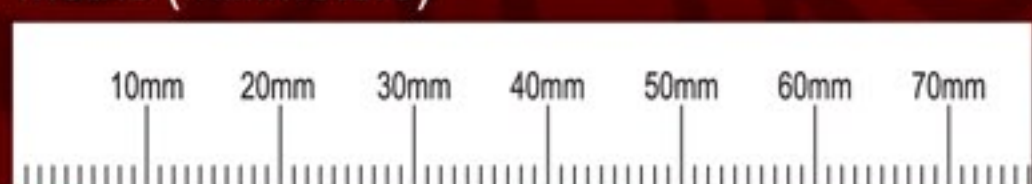
millimeters X .03937 = inches

Tip: When converting to inches, round to the nearest sixteenth of an inch.

Inches and fractions of inches



Metric (millimeters)





Rings

Implant Grade 316LVM
Stainless Steel

Titanium Rings - Page 11
14k Gold Rings - Page 12

- ~ The Highest Quality Implant Grade 316LVM Stainless Steel
- ~ Flawless Mirror Finish
- ~ Hand Polished
- ~ Gems are Bezel Set By Hand
- ~ Unique Designs



CAPTIVE BEAD RINGS



also available with no bead

Available Standard Annealed
or Double Annealed ...for the same
low price!

18ga	1/4"	5/16"	3/8"	7/16"	1/2"				
16ga	1/4"	5/16"	3/8"	7/16"	1/2"	9/16"			
14ga	1/4"	5/16"	3/8"	7/16"	1/2"	9/16"	5/8"	3/4"	
12ga		5/16"	3/8"	7/16"	1/2"	9/16"	5/8"	3/4"	7/8"
10ga		5/16"	3/8"	7/16"	1/2"	9/16"	5/8"	3/4"	7/8"
8ga			3/8"	7/16"	1/2"	9/16"	5/8"	3/4"	7/8"

custom sizes available page 4 in the Price List

STONE BEADS

Hematite

Black Onyx

Jade

Blue Agate

Carnelian

Rose Quartz

Lapis Lazuli

Tiger's Eye

Leopard Jasper

FLAT TIP RINGS



Another Body Circle original

14ga	1/4"	5/16"	3/8"	7/16"	1/2"	9/16"	5/8"	3/4"	
12ga		5/16"	3/8"	7/16"	1/2"	9/16"	5/8"	3/4"	7/8"
10ga		5/16"	3/8"	7/16"	1/2"	9/16"	5/8"	3/4"	7/8"
8ga			3/8"	7/16"	1/2"	9/16"	5/8"	3/4"	7/8"
6ga				7/16"	1/2"	9/16"	5/8"	3/4"	7/8"
4ga					1/2"	9/16"	5/8"	3/4"	7/8"

page 4 in the Price List

D-RINGS



Great for eyebrow and
nipple piercings

18ga	5/16"	3/8"	7/16"						
16ga	5/16"	3/8"	7/16"	1/2"					
14ga	5/16"	3/8"	7/16"	1/2"	9/16"	5/8"	3/4"		
12ga			7/16"	1/2"	9/16"	5/8"	3/4"		

page 4 in the Price List

TRIANGLE NAVEL RINGS



The ring lays inside the navel
to promote faster healing

18ga	5/16"	3/8"	7/16"						
16ga	5/16"	3/8"	7/16"	1/2"					
14ga	5/16"	3/8"	7/16"	1/2"					
12ga	5/16"	3/8"	7/16"	1/2"					

page 4 in the Price List

TAPERED OVAL RINGS



Perfect for stretching
up a gauge

14ga	7/16"	1/2"	5/8"						
12ga	7/16"	1/2"	5/8"						
10ga	7/16"	1/2"	5/8"	3/4"					
8ga	7/16"	1/2"	5/8"	3/4"					
6ga		1/2"	5/8"	3/4"					

page 4 in the Price List

GEM COLORS

Clear

Pink

Red

Purple

Blue

Light Blue

Light Green

Green

Black



Barbells

Implant Grade 316LVM Stainless Steel

Titanium Barbells - Page 11
14k Gold Barbells - Page 12

- ~All Internally Threaded
- ~Hand Polished
- ~Both Ends are Removable
- ~Gems are Bezel Set By Hand
- ~Counterbored Balls
- ~Custom Sizes Available



STRAIGHT BARBELLS



standard lengths:

16ga	3/16"	1/4"	5/16"	3/8"	7/16"	1/2"	9/16"	5/8"	11/16"	3/4"	7/8"	1"
14ga	3/16"	1/4"	5/16"	3/8"	7/16"	1/2"	9/16"	5/8"	11/16"	3/4"	7/8"	1"
12ga	1/4"	5/16"	3/8"	7/16"	1/2"	9/16"	5/8"	11/16"	3/4"	7/8"	1"	
10ga	1/4"	5/16"	3/8"	7/16"	1/2"	9/16"	5/8"	11/16"	3/4"	7/8"	1"	
8ga	1/4"	5/16"	3/8"	7/16"	1/2"	9/16"	5/8"	11/16"	3/4"	7/8"	1"	
6ga	1/4"	5/16"	3/8"	7/16"	1/2"	9/16"	5/8"	11/16"	3/4"	7/8"	1"	

industrial lengths:

16ga	1 1/8"	1 1/4"	1 5/16"	1 3/8"	1 7/16"	1 1/2"
14ga	1 1/8"	1 1/4"	1 5/16"	1 3/8"	1 7/16"	1 1/2"
12ga	1 1/8"	1 1/4"	1 5/16"	1 3/8"	1 7/16"	1 1/2"
10ga	1 1/8"	1 1/4"	1 5/16"	1 3/8"	1 7/16"	1 1/2"
8ga	1 1/8"	1 1/4"	1 5/16"	1 3/8"	1 7/16"	1 1/2"
6ga	1 1/8"	1 1/4"	1 5/16"	1 3/8"	1 7/16"	1 1/2"

page 6 in
the Price List
custom sizes
available

TITANIUM COLORS



DISK LABRET BARBELLS



16ga	3/16"	1/4"	5/16"	3/8"	7/16"	1/2"
14ga	3/16"	1/4"	5/16"	3/8"	7/16"	1/2"
12ga		1/4"	5/16"	3/8"	7/16"	1/2"
10ga		1/4"	5/16"	3/8"	7/16"	1/2"
8ga		1/4"	5/16"	3/8"	7/16"	1/2"
6ga		1/4"	5/16"	3/8"	7/16"	1/2"

More Labret
Jewelry
see
page 6

page 6 in the Price List custom sizes available

CURVED BARBELLS



16ga	1/4"	5/16"	3/8"	7/16"	1/2"					
14ga	1/4"	5/16"	3/8"	7/16"	1/2"	9/16"	5/8"	3/4"	7/8"	1"
12ga	1/4"	5/16"	3/8"	7/16"	1/2"	9/16"	5/8"	3/4"	7/8"	1"
10ga		5/16"	3/8"	7/16"	1/2"	9/16"	5/8"	3/4"	7/8"	1"
8ga		5/16"	3/8"	7/16"	1/2"	9/16"	5/8"	3/4"	7/8"	1"
6ga		5/16"	3/8"	7/16"	1/2"	9/16"	5/8"	3/4"	7/8"	1"

page 6 in the Price List
custom sizes available

Jeweled Navel Curves - see page 7

GEM COLORS



CIRCULAR BARBELLS



16ga	1/4"	5/16"	3/8"	7/16"	1/2"					
14ga	1/4"	5/16"	3/8"	7/16"	1/2"	9/16"	5/8"	3/4"	7/8"	1"
12ga	1/4"	5/16"	3/8"	7/16"	1/2"	9/16"	5/8"	3/4"	7/8"	1"
10ga		5/16"	3/8"	7/16"	1/2"	9/16"	5/8"	3/4"	7/8"	1"
8ga			3/8"	7/16"	1/2"	9/16"	5/8"	3/4"	7/8"	1"
6ga			3/8"	7/16"	1/2"	9/16"	5/8"	3/4"	7/8"	1"

page 6 in the Price List
custom sizes available

spike ends are not
available on smaller
diameter circular barbells

BARBELL ENDS 16ga - 6ga

Not all barbell ends are available for all gauges of barbells. See price list for details.

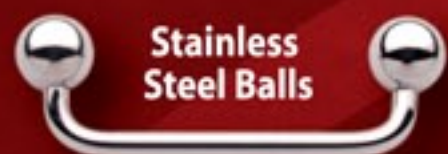
Stainless Steel Balls	Stainless Steel Half Balls	Dimpled Stainless Barbell Balls	Stainless Steel Spikes	Stainless Steel Disks	Set Gem Balls (Swarovski crystal)	Titanium Balls	Titanium Half Balls
1/8"		5/32"	1/8"	5/32" (16g only)	1/8"	1/8"	1/8"
5/32"		3/16"	5/32"	3/16"	5/32"	5/32"	5/32"
3/16"		7/32"	7/32"	1/4"	3/16"	3/16"	3/16"
7/32"			1/4"	5/16"	7/32"	7/32"	7/32"
1/4"				3/8"	1/4"	1/4"	1/4"
5/16"					5/16"	5/16"	5/16"
3/8"							

For 14ga - 10ga Rings
Specify ring gauge
when ordering

page 8 in the Price List

14k gold barbell balls - see page 12

SURFACE BARBELLS



Stainless Steel Balls



Half Balls



Spikes



Disks

Implant Grade 316LVM Stainless Steel

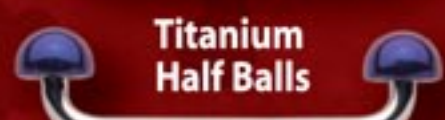
For Titanium Surface Bars, see page 11



Set Gem Balls



Titanium Balls



Titanium Half Balls

also available post only

rise	length									
3/32" or 1/8"	16ga	3/8"	7/16"	1/2"	9/16"	5/8"	3/4"	7/8"	1"	
	14ga	3/8"	7/16"	1/2"	9/16"	5/8"	3/4"	7/8"	1"	

custom lengths and rises available

45 degree angled rise also available

page 7 in the Price List

DERMAL ANCHORS

Implant Grade Titanium Anchor

6AL-4V ELI ASTM 136

rise
2mm (5/64")
or
2.4mm (3/32")

page 7 in the Price List



14ga post

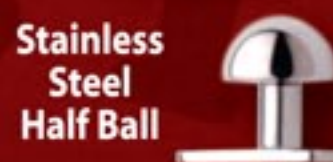
Base dimensions:
.020" thick
.090" wide
.250" (1/4") long



Stainless Steel Ball



Stainless Steel Healing Cap



Stainless Steel Half Ball



Stainless Steel Set Gem Ball



Stainless Steel Spike



Titanium Ball

see page 4 for titanium colors

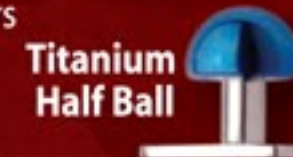
Actual Size:



Also available with a 14k Gold Ball



Stainless Steel Disk



Titanium Half Ball

LARGE GAUGE STRAIGHT BARBELLS



Stainless Steel Balls



Ball and Disk



Stainless Steel Disks

4ga	1/4"	5/16"	3/8"	7/16"	1/2"	9/16"	5/8"	3/4"	7/8"	1"
2ga	1/4"	5/16"	3/8"	7/16"	1/2"	9/16"	5/8"	3/4"	7/8"	1"
0ga		5/16"	3/8"	7/16"	1/2"	9/16"	5/8"	3/4"	7/8"	1"
00ga		5/16"	3/8"	7/16"	1/2"	9/16"	5/8"	3/4"	7/8"	1"
7/16"					1/2"	9/16"	5/8"	3/4"	7/8"	1"
1/2"					1/2"	9/16"	5/8"	3/4"	7/8"	1"

page 7 in the Price List
custom sizes available



All Large Gauge Barbells are internally threaded with counterbored balls

LARGE GAUGE CURVED BARBELLS



length

page 7 in the Price List
custom sizes available

	length									
4ga	7/16"	1/2"	9/16"	5/8"	3/4"	7/8"	1"			
2ga	7/16"	1/2"	9/16"	5/8"	3/4"	7/8"	1"			
0ga		1/2"	9/16"	5/8"	3/4"	7/8"	1"			
00ga				5/8"	3/4"	7/8"	1"			
7/16"					3/4"	7/8"	1"			
1/2"					3/4"	7/8"	1"			

LARGE GAUGE CIRCULAR BARBELLS



diameter

page 7 in the Price List
custom sizes available

	diameter									
4ga	1/2"	5/8"	3/4"	7/8"	1"					
2ga	1/2"	5/8"	3/4"	7/8"	1"					
0ga	1/2"	5/8"	3/4"	7/8"	1"					
00ga		5/8"	3/4"	7/8"	1"					

LARGE GAUGE BARBELL ENDS 4ga & UP



BALLS



5/8"

9/16"

1/2"

7/16"

3/8"

3/4"

7/8"

1"

DISKS



3/8"

7/16"

1/2"

price list page 8

Enhance your barbell with bigger, heavier balls.



Labret Jewelry

Implant Grade 316LVM
Stainless Steel

- ~ All Internally Threaded
- ~ Hand Polished
- ~ Gems are Bezel Set By Hand
- ~ Counterbored Balls
- ~ Custom Sizes Available
- ~ Made in USA

TITANIUM COLORS

- Polished
- Pink
- Blurple
- Blue
- Light Blue
- Teal
- Green
- Yellow

DISK LABRET BARBELLS

Stainless Steel Ball Half Ball Spike Disk Set Gem Ball Titanium Ball Titanium Half Ball



Both ends are removable and interchangeable

16ga	3/16"	1/4"	5/16"	3/8"	7/16"	1/2"
14ga	3/16"	1/4"	5/16"	3/8"	7/16"	1/2"
12ga	1/4"	5/16"	3/8"	7/16"	1/2"	
10ga	1/4"	5/16"	3/8"	7/16"	1/2"	
8ga	1/4"	5/16"	3/8"	7/16"	1/2"	
6ga	1/4"	5/16"	3/8"	7/16"	1/2"	

page 9 in the Price List custom sizes available

FISHTAIL LABRETS



page 9 in the Price List



GEM COLORS

- Clear
- Pink
- Red
- Purple
- Blue
- Light Blue
- Light Green
- Green
- Black

LABRET SPIKES

page 9 in the Price List



Comes with a nitrile O-ring (plus extras) to keep it secure

LABRET CLAWS

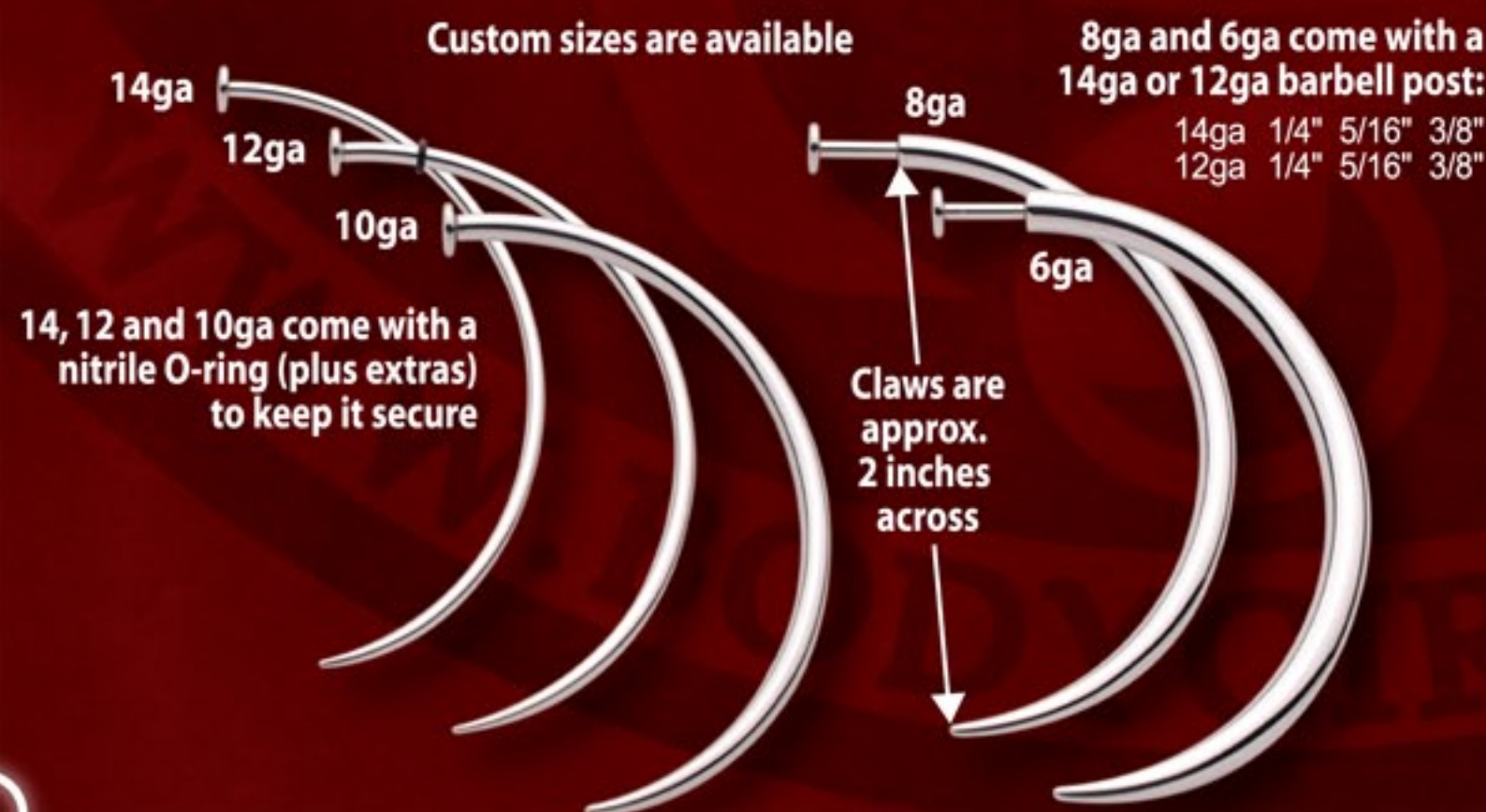
page 9 in the Price List



Comes with a nitrile O-ring (plus extras) to keep it secure

HALF-CIRCLE LABRET CLAWS

page 9 in the Price List



~ Free Shipping*
 ~ No Minimum Order
 ~ APP Certified
 Manufacturer
 * see inside front cover for details

~ Hand Polished
 ~ Gems are Bezel Set By Hand
 ~ Custom Sizes Available
 ~ All of Our Jewelry is
 Hand Crafted in USA

Nostril Navel & Nipple Jewelry



NOSTRIL SCREWS



NEW ITEM!

Fully annealed
and easy to bend.



Sold straight only.
 18ga or 20ga
 3/4" long

page 9 in the Price List

NOSE BONES



NEW ITEM!

18ga or 20ga
 1/4" between the ends

page 9 in the Price List



NAVEL CURVES



For Navel Rings
 see page 2

Length between balls:
 14ga 5/16" 3/8" 7/16"

Bottom ball
 is fixed

page 9 in the Price List



NIPPLE SHIELDS

All Stainless Steel!



Regular

Inside Diameter	Outside Diameter
5/16"	1"
3/8"	1"
7/16"	1"
1/2"	1 3/16"
9/16"	1 3/16"



Large

Inside Diameter	Outside Diameter
5/16"	1 3/16"
3/8"	1 7/16"
7/16"	1 7/16"
1/2"	1 7/16"
9/16"	1 7/16"

page 14 in the Price List





Claws Crescents Ear Spirals Plugs

~ The Highest Quality Implant
Grade 316LVM Stainless Steel
~ Hand Polished
~ Replacement O-rings Available
~ Custom Sizes Available
~ Made in USA

TITANIUM COLORS



SHORT CLAWS 14ga - 8ga

All ends are removable and interchangeable.



Comes with a nitrile O-ring
(plus extras) to keep it secure.

Available gauges:	Approximate length:
14ga	5/8"
12ga	5/8"
10ga	5/8"
8ga	7/8"

page 10 in the Price List
custom sizes available

LONG CLAWS 14ga - 8ga



Comes with a nitrile O-ring
(plus extras) to keep it secure.

Available gauges:	Approximate length:
14ga	1 1/4"
12ga	1 1/4"
10ga	1 1/4"
8ga	1 1/4"

page 10 in the Price List
custom sizes available

CIRCLE CLAWS 14ga - 8ga



Comes with a nitrile O-ring
(plus extras) to keep it secure.

14ga	1/2"	5/8"
12ga	1/2"	5/8" 3/4"
10ga	1/2"	5/8" 3/4"
8ga	1/2"	5/8" 3/4"

page 10 in the Price List
custom sizes available

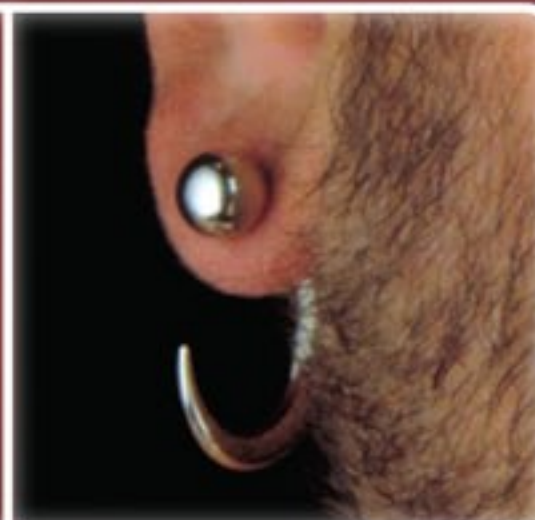
CIRCLE CLAWS 6ga - 00ga



Comes with a nitrile O-ring
(plus extras) to keep it secure.

6ga	1/2"	5/8"	3/4"
4ga		5/8"	3/4"
2ga		5/8"	3/4"

page 10 in the Price List
custom sizes available



GEM COLORS



LONG CLAWS 6ga - 00ga



Available gauges:	Approximate length:
6ga	1 1/4"
4ga	1 1/4"
2ga	1 3/8"
0ga	1 1/2"
00ga	1 5/8"

page 10 in the Price List

SHORT CLAWS 6ga - 00ga



Comes with a nitrile O-ring
(plus extras) to keep it secure.

Available gauges:	Approximate length:
6ga	7/8"
4ga	7/8"
2ga	1"
0ga	1"
00ga	1 3/8"

page 10 in the Price List

CRESCENTS

Supplied with
nitrile O-rings
plus extras



Titanium Crescents page 11
14k Gold Crescents page 12

Available with
a center notch
for septum wear.
6ga - 2ga only.
Notch is one
gauge smaller.

Available sizes:

16ga	5/16"	3/8"	7/16"	1/2"	5/8"
14ga	5/16"	3/8"	7/16"	1/2"	5/8"
12ga	5/16"	3/8"	7/16"	1/2"	5/8"
10ga	5/16"	3/8"	7/16"	1/2"	5/8"
8ga	5/16"	3/8"	7/16"	1/2"	5/8"
6ga		3/8"	7/16"	1/2"	5/8"
4ga			7/16"	1/2"	5/8"
2ga				1/2"	5/8"

page 11 in the Price List
custom sizes available



EAR SPIRALS

Small

Available
gauges:

14ga
12ga
10ga



page 10 in the Price List

Medium

Available
gauges:

10ga
8ga
6ga



Large

Available
gauges:

8ga
6ga
4ga



DOME PLUGS

**O-rings
only**



Extra O-rings
included

Length refers to
the straight section

Disk Back



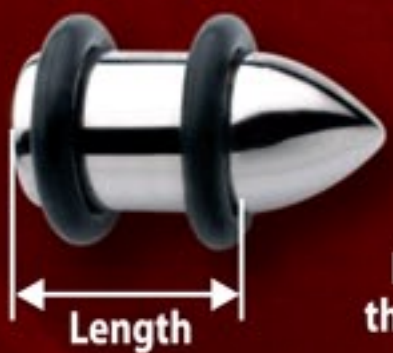
Gauge	Length
10ga	1/2"
8ga	1/2"
6ga	1/2"
4ga	1/2"
2ga	1/2"
0ga	1/2"
00ga	1/2"

page 10 in the Price List
custom sizes available



BULLET PLUGS

**O-rings
only**



Extra O-rings
included

Length refers to
the straight section

Disk Back



Gauge	Length
10ga	1/2"
8ga	1/2"
6ga	1/2"
4ga	1/2"
2ga	1/2"
0ga	1/2"
00ga	1/2"

page 10 in the Price List
custom sizes available



FLAT PLUGS

One Disk



Extra O-rings
included

Gauge	Length
10ga	1/2"
8ga	1/2"
6ga	1/2"
4ga	1/2"
2ga	1/2"
0ga	1/2"
00ga	1/2"

page 10 in the Price List
custom sizes available

Two Disk



Gauge	Length
10ga	5/16" 3/8" 7/16" 1/2"
8ga	5/16" 3/8" 7/16" 1/2"
6ga	5/16" 3/8" 7/16" 1/2"
4ga	5/16" 3/8" 7/16" 1/2"
2ga	5/16" 3/8" 7/16" 1/2"
0ga	5/16" 3/8" 7/16" 1/2"
00ga	5/16" 3/8" 7/16" 1/2"

page 10 in the Price List
custom sizes available



Septum Jewelry

Implant Grade 316LVM
Stainless Steel

Standard Notch
Keeps it securely centered.
Best for smaller gauges.

No Notch
Use nitrile o-rings to
keep it centered

Small Notch
Best for 6ga and up.
A very shallow notch
to keep it centered.



SEPTUM SPIKES



Gauge size refers to the thickness at the center notch. Standard Notch Septum Jewelry is made from the next larger gauge stock. See top of page for other center notch options.

Gauge	Length				
14ga	1 1/4"	1 1/2"	1 3/4"	2"	2 1/2"
12ga	1 1/4"	1 1/2"	1 3/4"	2"	2 1/2"
10ga	1 1/4"	1 1/2"	1 3/4"	2"	2 1/2"
8ga	1 1/4"	1 1/2"	1 3/4"	2"	2 1/2"
6ga	1 1/4"	1 1/2"	1 3/4"	2"	2 1/2"
4ga		1 1/2"	1 3/4"	2"	2 1/2"
2ga		1 1/2"	1 3/4"	2"	2 1/2"
0ga		1 1/2"	1 3/4"	2"	2 1/2"
00ga			1 3/4"	2"	2 1/2"

page 11 in the Price List
custom sizes available

SEPTUM TUSKS



Gauge size refers to the thickness at the center notch. Standard Notch Septum Jewelry is made from the next larger gauge stock. See top of page for other center notch options.

Gauge	Length				
14ga	1 1/4"	1 1/2"	1 3/4"	2"	2 1/2"
12ga	1 1/4"	1 1/2"	1 3/4"	2"	2 1/2"
10ga	1 1/4"	1 1/2"	1 3/4"	2"	2 1/2"
8ga	1 1/4"	1 1/2"	1 3/4"	2"	2 1/2"
6ga		1 1/2"	1 3/4"	2"	2 1/2"
4ga			1 3/4"	2"	2 1/2"
2ga				2"	2 1/2"

page 11 in the Price List
custom sizes available

SEPTUM CURLS

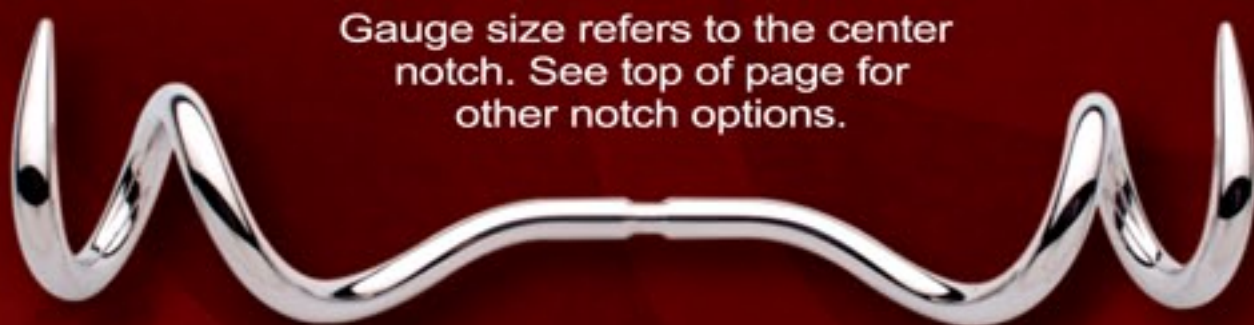


Gauge size refers to the center notch. See top of page for other notch options.

Gauge	Approximate length from tip to tip
14ga	2 1/2"
12ga	2 1/2"
10ga	2 5/8"
8ga	2 3/4"

page 11 in the Price List
available only in sizes listed

DOUBLE CURLS



Gauge size refers to the center notch. See top of page for other notch options.

Gauge	Approximate length from tip to tip
14ga	3 1/4"
12ga	3 3/8"
10ga	3 1/2"

page 11 in the Price List
available only in sizes listed

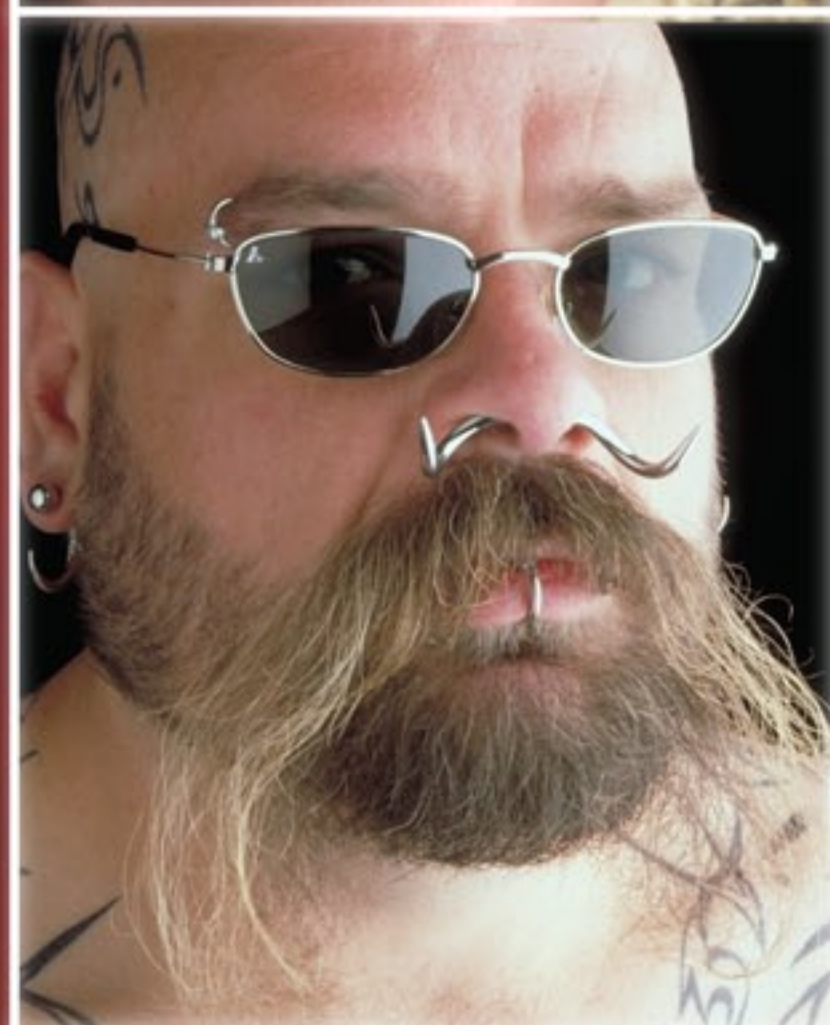
SEPTUM RETAINER



Gauge	Approx inside width
16ga	1/4"
14ga	1/4"
12ga	1/4"
10ga	1/4"
8ga	1/4"
6ga	5/16"
4ga	5/16"
2ga	5/16"

The most comfortable septum retainer ever made!

page 11 in the Price List



TITANIUM COLORS



Titanium Jewelry

Implant Grade Titanium
6AL-4V ELI ASTM 136



TITANIUM STRAIGHT BARBELLS

Titanium Balls

available
post only



Titanium Half Balls

also available with labret disk
see price list page 12



Also available with any of our stainless steel barbell ends on page 4

16ga	3/16"	1/4"	5/16"	3/8"	7/16"	1/2"							
14ga	3/16"	1/4"	5/16"	3/8"	7/16"	1/2"	9/16"	5/8"	11/16"	3/4"	7/8"	1"	
12ga		1/4"	5/16"	3/8"	7/16"	1/2"	9/16"	5/8"	11/16"	3/4"	7/8"	1"	

page 12 in the Price List custom sizes available

TITANIUM CAPTIVE BEAD RINGS



page 12 in the Price List

18ga	5/16"	3/8"	7/16"					
16ga	5/16"	3/8"	7/16"	1/2"				
14ga	5/16"	3/8"	7/16"	1/2"	5/8"	3/4"		
12ga		3/8"	7/16"	1/2"	5/8"	3/4"	7/8"	1"

Replacement beads are available. Specify ring size when ordering.

TITANIUM CRESCENTS



page 12 in the Price List

16ga	5/16"	3/8"	7/16"	1/2"	
14ga	5/16"	3/8"	7/16"	1/2"	5/8"
12ga	5/16"	3/8"	7/16"	1/2"	5/8"

TITANIUM CURVED BARBELLS

Titanium Balls

available
post only



Titanium Half Balls



Also available with any of our stainless steel barbell ends on page 4

16ga	1/4"	5/16"	3/8"	7/16"	1/2"					
14ga	1/4"	5/16"	3/8"	7/16"	1/2"	9/16"	5/8"	3/4"	7/8"	1"
12ga	1/4"	5/16"	3/8"	7/16"	1/2"	9/16"	5/8"	3/4"	7/8"	1"

page 12 in the Price List custom sizes available

TITANIUM DERMAL ANCHORS

page 12 in the Price List

Titanium Ball



Titanium Half Ball



post is 14ga
rise:
2mm (5/64")
or
2.4mm (3/32")

Actual Size:



Anchor Only



Base
dimensions:
.020" thick
.090" wide
.250" (1/4")
long

Also available with any of our stainless steel barbell ends on page 4

TITANIUM CIRCULAR BARBELLS

Titanium Balls



Titanium Half Balls



Also available with any of our stainless steel barbell ends on page 4

	16ga	1/4"	5/16"	3/8"	7/16"	1/2"																																																																																																																																																																																																																																																																																																																																																																																																																																																																																																																																																																																																																																																																																																																																																																																																																																																																																																																																																																																																																																																																																																																																																																																																																																																																																																																																																																																																																																																																																																																																																																																																																																																																			</
--	------	------	-------	------	-------	------	--	--	--	--	--	--	--	--	--	--	--	--	--	--	--	--	--	--	--	--	--	--	--	--	--	--	--	--	--	--	--	--	--	--	--	--	--	--	--	--	--	--	--	--	--	--	--	--	--	--	--	--	--	--	--	--	--	--	--	--	--	--	--	--	--	--	--	--	--	--	--	--	--	--	--	--	--	--	--	--	--	--	--	--	--	--	--	--	--	--	--	--	--	--	--	--	--	--	--	--	--	--	--	--	--	--	--	--	--	--	--	--	--	--	--	--	--	--	--	--	--	--	--	--	--	--	--	--	--	--	--	--	--	--	--	--	--	--	--	--	--	--	--	--	--	--	--	--	--	--	--	--	--	--	--	--	--	--	--	--	--	--	--	--	--	--	--	--	--	--	--	--	--	--	--	--	--	--	--	--	--	--	--	--	--	--	--	--	--	--	--	--	--	--	--	--	--	--	--	--	--	--	--	--	--	--	--	--	--	--	--	--	--	--	--	--	--	--	--	--	--	--	--	--	--	--	--	--	--	--	--	--	--	--	--	--	--	--	--	--	--	--	--	--	--	--	--	--	--	--	--	--	--	--	--	--	--	--	--	--	--	--	--	--	--	--	--	--	--	--	--	--	--	--	--	--	--	--	--	--	--	--	--	--	--	--	--	--	--	--	--	--	--	--	--	--	--	--	--	--	--	--	--	--	--	--	--	--	--	--	--	--	--	--	--	--	--	--	--	--	--	--	--	--	--	--	--	--	--	--	--	--	--	--	--	--	--	--	--	--	--	--	--	--	--	--	--	--	--	--	--	--	--	--	--	--	--	--	--	--	--	--	--	--	--	--	--	--	--	--	--	--	--	--	--	--	--	--	--	--	--	--	--	--	--	--	--	--	--	--	--	--	--	--	--	--	--	--	--	--	--	--	--	--	--	--	--	--	--	--	--	--	--	--	--	--	--	--	--	--	--	--	--	--	--	--	--	--	--	--	--	--	--	--	--	--	--	--	--	--	--	--	--	--	--	--	--	--	--	--	--	--	--	--	--	--	--	--	--	--	--	--	--	--	--	--	--	--	--	--	--	--	--	--	--	--	--	--	--	--	--	--	--	--	--	--	--	--	--	--	--	--	--	--	--	--	--	--	--	--	--	--	--	--	--	--	--	--	--	--	--	--	--	--	--	--	--	--	--	--	--	--	--	--	--	--	--	--	--	--	--	--	--	--	--	--	--	--	--	--	--	--	--	--	--	--	--	--	--	--	--	--	--	--	--	--	--	--	--	--	--	--	--	--	--	--	--	--	--	--	--	--	--	--	--	--	--	--	--	--	--	--	--	--	--	--	--	--	--	--	--	--	--	--	--	--	--	--	--	--	--	--	--	--	--	--	--	--	--	--	--	--	--	--	--	--	--	--	--	--	--	--	--	--	--	--	--	--	--	--	--	--	--	--	--	--	--	--	--	--	--	--	--	--	--	--	--	--	--	--	--	--	--	--	--	--	--	--	--	--	--	--	--	--	--	--	--	--	--	--	--	--	--	--	--	--	--	--	--	--	--	--	--	--	--	--	--	--	--	--	--	--	--	--	--	--	--	--	--	--	--	--	--	--	--	--	--	--	--	--	--	--	--	--	--	--	--	--	--	--	--	--	--	--	--	--	--	--	--	--	--	--	--	--	--	--	--	--	--	--	--	--	--	--	--	--	--	--	--	--	--	--	--	--	--	--	--	--	--	--	--	--	--	--	--	--	--	--	--	--	--	--	--	--	--	--	--	--	--	--	--	--	--	--	--	--	--	--	--	--	--	--	--	--	--	--	--	--	--	--	--	--	--	--	--	--	--	--	--	--	--	--	--	--	--	--	--	--	--	--	--	--	--	--	--	--	--	--	--	--	--	--	--	--	--	--	--	--	--	--	--	--	--	--	--	--	--	--	--	--	--	--	--	--	--	--	--	--	--	--	--	--	--	--	--	--	--	--	--	--	--	--	--	--	--	--	--	--	--	--	--	--	--	--	--	--	--	--	--	--	--	--	--	--	--	--	--	--	--	--	--	--	--	--	--	--	--	--	--	--	--	--	--	--	--	--	--	--	--	--	--	--	--	--	--	--	--	--	--	--	--	--	--	--	--	--	--	--	--	--	--	--	--	--	--	--	--	--	--	--	--	--	--	--	--	--	--	--	--	--	--	--	--	--	--	--	--	--	--	--	--	--	--	--	--	--	--	--	--	--	--	--	--	--	--	--	--	--	--	--	--	--	--	--	--	--	--	--	--	--	--	--	--	--	--	--	--	--	--	--	--	--	--	--	--	--	--	--	--	--	--	--	--	--	--	--	--	--	--	--	--	--	--	--	--	--	--	--	--	--	--	--	--	--	--	--	--	--	--	--	--	--	--	--	--	--	--	--	--	--	--	--	--	--	--	--	--	--	--	--	--	--	--	--	--	--	--	--	--	--	--	--	--	--	--	--	--	--	--	--	--	--	--	--	--	--	--	--	--	--	--	--	--	--	--	--	--	--	--	--	--	--	--	--	--	--	--	--	--	--	--	--	--	--	--	--	--	--	--	--	--	--	--	--	--	--	--	--	--	--	--	--	--	--	--	--	--	--	--	--	--	--	--	--	--	--	--	--	--	--	--	--	--	--	--	--	--	--	--	--	--	--	--	--	--	--	--	--	--	--	--	--	--	--	--	--	--	--	--	--	--	--	--	--	--	--	--	--	--	--	--	--	--	--	--	--	--	--	--	--	--	--	--	--	--	--	--	--	--	--	--	--	--	--	--	--	--	--	--	--	--	--	--	--	--	--	--	--	--	--	--	--	--	--	--	--	--	--	--	--	--	--	--	--	--	--	--	--	--	--	--	--	--	--	--	--	--	--	--	--	--	--	--	--	--	--	--	--	--	--	--	--	--	--	--	--	--	--	--	--	--	--	--	--	--	--	--	--	--	--	--	--	--	--	--	--	--	--	--	--	--	--	--	--	--	--	--	--	--	--	--	--	--	--	--	--	--	--	--	--	--	--	--	--	--	--	--	--	--	--	--	--	--	--	--	--	--	--	--	--	--	--	--	--	--	--	--	--	--	--	--	--	--	--	--	--	--	--	--	--	--	--	--	--	--	--	--	--	--	--	--	--	--	--	--	--	--	--	--	--	--	--	--	--	--	--	--	--	--	--	--	--	--	--	--	--	--	--	--	--	--	--	--	--	--	--	--	--	--	--	--	--	--	--	--	--	--	--	--	--	--	--	--	--	--	--	--	--	--	--	--	--	--	--	--	--	--	--	--	--	--	--	--	--	--	--	--	--	--	--	--	--	--	--	--	--	--	--	--	--	--	--	--	--	--	--	--	--	--	--	--	--	--	--	--	--	--	--	--	--	--	--	--	--	--	--	--	--	--	--	--	--	--	--	--	--	--	--	--	--	--	--	--	--	--	--	--	--	--	--	--	--	--	--	--	--	--	--	--	--	--	--	--	--	--	--	--	--	--	--	--	--	--	--	--	--	--	--	--	--	--	--	--	--	--	--	--	--	--	--	--	--	--	--	--	--	--	--	--	--	--	--	--	--	--	--	--	--	--	--	--	--	--	--	--	--	--	--	--	--	--	--	--	--	--	--	--	--	--	--	--	--	----

page 12 in the Price List custom sizes available

TITANIUM BARBELL ENDS

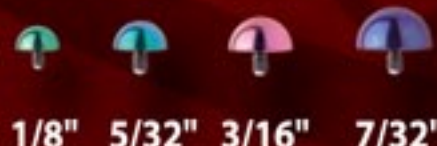
For Stainless Steel Barbell Balls, Disks, Spikes, and Gem Ends, see page 4

Titanium Balls



page 8 in the Price List

Titanium Half Balls



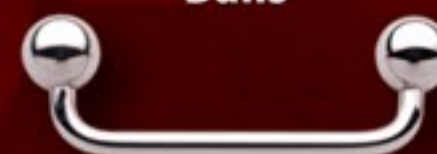
1/8" 5/32" 3/16" 7/32"

Not all barbell ends are available for all gauges of barbells. See price list for details.

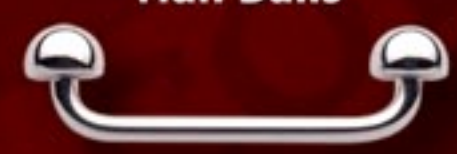
TITANIUM SURFACE BARBELLS

available
post only

Titanium Balls



Titanium Half Balls



Also available with any of our stainless steel barbell ends on page 4

Rise	Length
3/32" or 1/8"	16ga 3/8" 7/16" 1/2" 9/16" 5/8" 3/4" 7/8" 1"
	14ga 3/8" 7/16" 1/2" 9/16" 5/8" 3/4" 7/8" 1"

page 12 in the Price List custom sizes available



14k Gold

page 13 in the Price List

Email custom gold

requests to:

scott@bodycircle.com

14k Gold Beads for captive bead rings

18 - 16ga	3mm hollow	
14 - 12ga	4mm hollow	
10ga	3/16" solid	
8ga	1/4" solid	

14k Gold Bars for bar segment rings

14ga	
12ga	
10ga	
8ga	

14k Gold Barbell Balls

1/8"	
5/32"	
3/16"	
7/32"	
1/4"	
5/16"	

see
Price List
page 13
for details

14K GOLD CAPTIVE BEAD RINGS



18ga	1/4"	5/16"	3/8"	7/16"	
16ga	1/4"	5/16"	3/8"	7/16"	1/2"
14ga		5/16"	3/8"	7/16"	1/2" 9/16" 5/8"
12ga			3/8"	7/16"	1/2" 9/16" 5/8" 3/4"
10ga				7/16"	1/2" 9/16" 5/8" 3/4"
8ga				7/16"	1/2" 9/16" 5/8" 3/4"

14K GOLD STRAIGHT BARBELLS



Custom
lengths
available

16ga	1/4"	5/16"	3/8"	7/16"	1/2"	9/16"	5/8"	3/4"	7/8"	1"
14ga	1/4"	5/16"	3/8"	7/16"	1/2"	9/16"	5/8"	3/4"	7/8"	1"
12ga	1/4"	5/16"	3/8"	7/16"	1/2"	9/16"	5/8"	3/4"	7/8"	1"
10ga	1/4"	5/16"	3/8"	7/16"	1/2"	9/16"	5/8"	3/4"	7/8"	1"
8ga	1/4"	5/16"	3/8"	7/16"	1/2"	9/16"	5/8"	3/4"	7/8"	1"

14K GOLD BALL & SOCKET RINGS



8ga	7/16"	1/2"	5/8"	3/4"
6ga	7/16"	1/2"	5/8"	3/4"

14K GOLD DISK LABRET BARBELLS



16ga	1/4"	5/16"	3/8"	7/16"
14ga	1/4"	5/16"	3/8"	7/16"
12ga	1/4"	5/16"	3/8"	7/16"
10ga	1/4"	5/16"	3/8"	7/16"

14K GOLD CONTINUOUS RINGS



20ga	1/4"	5/16"	3/8"
18ga	1/4"	5/16"	3/8" 7/16"
16ga	1/4"	5/16"	3/8" 7/16" 1/2"
14ga		5/16"	3/8" 7/16" 1/2"

14K GOLD CURVED BARBELLS



16ga	1/4"	5/16"	3/8"	7/16"	1/2"
14ga	1/4"	5/16"	3/8"	7/16"	1/2"
12ga		5/16"	3/8"	7/16"	1/2"
10ga			3/8"	7/16"	1/2"

14K GOLD BAR SEGMENT RINGS



14ga	5/16"	3/8"	7/16"	1/2"	9/16"	5/8"
12ga	5/16"	3/8"	7/16"	1/2"	9/16"	5/8" 3/4"
10ga		3/8"	7/16"	1/2"	9/16"	5/8" 3/4"
8ga		3/8"	7/16"	1/2"	9/16"	5/8" 3/4"

14K GOLD CIRCULAR BARBELLS



16ga	3/8"	7/16"	1/2"
14ga	3/8"	7/16"	1/2" 5/8" 3/4"
12ga	3/8"	7/16"	1/2" 5/8" 3/4"
10ga		7/16"	1/2" 5/8" 3/4"

14K GOLD CRESCENTS



16ga	5/16"	3/8"	7/16"
14ga	5/16"	3/8"	7/16" 1/2"
12ga	5/16"	3/8"	7/16" 1/2" 5/8"
10ga		3/8"	7/16" 1/2" 5/8"
8ga		3/8"	7/16" 1/2" 5/8"

14K GOLD D - RINGS



18ga	5/16"	3/8"	7/16"
16ga	5/16"	3/8"	7/16" 1/2"
14ga		3/8"	7/16" 1/2"

14K GOLD CLAWS

14k
Ball End

Stainless
Disk End

Long Claws

approx
length

14ga	1 1/4"
12ga	1 1/4"
10ga	1 1/4"

14k
Ball End

Stainless
Disk End

Short Claws

approx
length

14ga	5/8"
12ga	5/8"
10ga	5/8"

CUFFS & COLLARS

Individually handcrafted from heavy (1/16" thick x 3/4" wide) 316L stainless steel with a brushed finish.

Each comes with your choice of a brushed stainless steel ball, a semi precious stone ball, or a set gem ball.

page 14 in the Price List

Cuffs

small fits up to 6" wrist
medium fits up to 6 1/2" wrist
large fits up to 7" wrist
X large fits up to 7 1/2" wrist

Collars

small fits up to 13" neck
medium fits up to 14" neck
large fits up to 15" neck
X large fits up to 16" neck

See all new Cuffs and Collars on page 15



Set Gem Ball (Swarovski crystal)

- Clear
- Pink
- Red
- Purple
- Blue
- Light Blue
- Light Green
- Green
- Black

Semi Precious Stone Ball

- Hematite
- Black Onyx
- Jade
- Carnelian
- Tiger Eye



See all new Cuffs and Collars on page 15

TOOLS

INSERTION TAPERS

page 15 in the Price List

Stainless steel insertion tapers are available from 16ga to 1". Tapers 16ga - 00ga are available with either a concave end for rings or a fixed barbell alignment pin. Custom lengths available. Autoclave safe.

Ring/Plug Tapers 16ga - 1"



Barbell Tapers 16ga - 1/2"



Taper Sets Available at Discounted Prices!



16ga - 2ga tapers are 3" long
0ga - 9/16" tapers are 3 1/2" long
5/8" - 1" tapers are 4" long
Custom length tapers are available

PENNINGTON FORCEPS

Stainless steel forceps are approximately 6 1/2" long with a 3/16" x 3/8" triangular head. Custom made for Body Circle Designs without the usual teeth. Tension can be controlled using an elastic band. Autoclave safe.

RING OPENING PLIERS

Stainless steel pliers that will handle rings from 18ga to 4ga. Approximately 5 1/2" long. There are five smooth grooves to handle a variety of ring diameters. Autoclave safe.

RING CLOSING PLIERS

Stainless steel pliers that will handle rings from 18ga up to 10ga. Approximately 5 1/2" long. Autoclave safe.

BRASS LINED PLIERS

Small pliers with brass lined jaws for closing and adjusting small gauge rings without marring the surface. Jaws have a small groove across the end to hold small rings securely.

STAINLESS STEEL RULER

A handy 6" stainless steel ruler with inch markings on one side and millimeter markings on the other. Ideal for quick jewelry measuring and size conversion.





Body Circle Designs New Jewelry 2011 Update

Phone:
206-244-8430
800-244-8430
Fax:
206-244-3478
Email:
bcd@bodycircle.com



SCREWBALL RINGS - 316LVM Stainless Steel



**No Tools
Required**



	Ring Diameter	Standard Ball Size
8ga	1/2" 5/8" 3/4"	3/8"
6ga	1/2" 5/8" 3/4"	7/16"
4ga	1/2" 5/8" 3/4"	1/2"
2ga	1/2" 5/8" 3/4" 1"	9/16"
0ga	1/2" 5/8" 3/4" 1"	5/8"
00ga	5/8" 3/4" 1"	5/8"

Custom ring diameters and ball sizes available



Our design allows
for a tighter fit and
minimal ball gap.

The look of a ring;
the convenience
of a barbell.

WEIGHT RINGS - 316LVM Stainless Steel

**No Tools
Required**

Ball screws into
one side like our
Screwball Ring



Ring Sizes: 8ga, 6ga or 4ga
3/4" inside diameter

Ball Size: 1 inch
Ball Weight: 68.3 grams

Custom size rings by request.



All three sizes have a
solid #2-56 screw post,
the same as our
Large Gauge Barbells

Suitable for Play

STIRRUP BARBELLS - 316LVM Stainless Steel



Stainless
Steel Balls



Half-Balls



Spike Ends

Length



Disk Ends



Set Gem
Balls

Length (between balls)

16ga	5/16" 3/8" 7/16"
14ga	5/16" 3/8" 7/16" 1/2" 9/16" 5/8"
12ga	3/8" 7/16" 1/2" 9/16" 5/8"
10ga	3/8" 7/16" 1/2" 9/16" 5/8"

Both Barbell Ends are Removable

Barbell and Stirrup are the Same Gauge

BLACK GEMS



**NEW GEM
COLOR**

Available in all standard sizes.
See price list for details.



CUFFS & COLLARS

All Cuffs and Collars are individually handcrafted from heavy (1/16" thick x 3/4" wide) 316L stainless steel with a brushed finish.

Cuffs are sold individually, not in pairs.

Now Available in Four Styles:

Style 1 - Shackle and Lock **NEW!**

Style 2 - Stainless Steel Ring

Style 3 - SS Ring with Stone Ball

Style 4 - SS Ring with Set Gem Ball

Sizes:

Cuffs

small fits up to 6" wrist
medium fits up to 6 1/2" wrist
large fits up to 7" wrist
X large fits up to 7 1/2" wrist

Collars

small fits up to 13" neck
medium fits up to 14" neck
large fits up to 15" neck
X large fits up to 16" neck

STYLE 1

Shackle and Lock

NEW!



Includes a free padlock for added security



STYLE 2

Stainless Steel Ring
with Stainless Steel Ball

**The
"Original"
Style**



STYLE 3

**Semi Precious
Stone Ball**



Hematite
Black Onyx
Jade
Carnelian
Tiger Eye

STYLE 4

Set Gem Ball
(Swarovski crystal)



Black
Clear
Pink
Red
Purple
Blue
Light Blue
Light Green
Green



CUSTOM BARBELLS & BALLS - 316LVM Stainless Steel

**Need Bigger Balls?
We've Got What You Need:**

**Ball sizes up to one inch
on almost any barbell**

Big balls have a solid #2-56 thread and are available on:
Stainless Steel Straight Barbells - 8ga & up
Stainless Steel Curved Barbells - 6ga & up

Ball sizes: 3/8" 7/16" 1/2" 9/16" 5/8" 3/4" 7/8" 1"

Custom length barbells also available

Call or email us for a quote:

800-244-8430

bcd@bodycircle.com



Actual size one inch ball



Hand Crafted in the USA
100% Guaranteed
No Minimum Order
Free Shipping in the USA
Fast Delivery
Quantity Discounts
see price list or call for details



Body Circle Designs
PO Box 68249
Seattle, WA 98168

phone: 206-244-8430
toll free (US & Canada): 800-244-8430
fax: 206-244-3478

e-mail: bcd@bodycircle.com
web: www.bodycircle.com



ASSOCIATION OF PROFESSIONAL PIERCERS
CORPORATE SPONSOR
www.safepiercing.org

catalog #6